



LAB

to be updated

30TH ANNIVERSARY

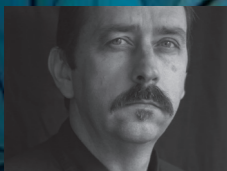


since

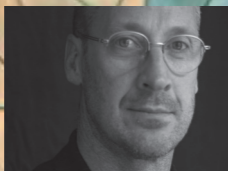
1994

通过对建筑形式的研究分析，澳大利亚LAB建筑师事务所在不断丰富、充实和扩张新组织策略所带来的影响的探索。

LAB architecture studio has consistently proposed a re-invigorated and expanded exploration of the effects of new organisational and ordering strategies through architectural form.



Donald L. Bates
创始人
现任总裁
Founding Director
Current Director



Peter Davidson
创始人
Founding Director



Andy Wang
副总裁
Associate Director

SHANGHAI



Lorraine Zheng
总经理
General Manager

SHANGHAI



LAB has been focusing on low carbon and livable buildings for 30 years. Its works are distributed in Australia, the Middle East, China, the United Kingdom, India, South Africa and other places. It has won more than 50 international awards and has been cited and disseminated in 20 languages. Founder Donald Bates is currently the chairman of the Department of Architecture at the University of Melbourne. Representative works include: Melbourne Federation Square (rated as the youngest historic protected building in Australia), SOHO Shangdu, Nanhai Lihu Cultural Center, Pearl River Delta Water Resources Supporting Project, Middle East Abdullah Financial Center Zero Carbon Community, Flower Expo West Taihu and other cultural, commercial and tourism complexes. LAB provides solutions with sustainable value, integrating culture, business and citizen life, and becoming a vibrant urban heritage.

2024 is the 30th anniversary of the establishment of the firm. "Design DNA" has been integrated into our culture, business ethics, values, respect for partners and lifestyle. Peter Davidson, founder of LAB, said: "From made in China to design in China, the 'China process' will be envied by the world." LAB is even more proud of this, respects design culture, and gains the trust of customers and partners. In the gaps between shuttles, we walked into the 30-year light and shadow scroll. Each work condenses the careful design and hard work of LAB's partners and customers.

In the field of sustainable livability, LAB signed a low-carbon green cooperation memorandum on behalf of Melbourne, Victoria, and the governments of Tianjin, Nanjing, Xi'an, and other places, and won the 2018 United Nations Construction21 "Green Solution Award" and the first batch of "Healthy Building Demonstration Base". LAB presided over a number of high-end technology properties, and also has green and low-carbon buildings and planning in Dubai Cartel in the Middle East and Europe.

Professor Bates, President of LAB, is also a foreign expert judge for major projects in Shenzhen, Nanjing, Hainan, Xi'an and other places. The Governor of Victoria personally visited LAB's project in Nanjing, China, and cared about the low-carbon demonstration cooperation project.

LAB firmly believes that in China, green and low-carbon is an indispensable "standard configuration" for every project design, not an optional configuration. The positive sustainable building of "active optimization and passive priority" will achieve high efficiency, environmental friendliness, and health and well-being at the same time.

LAB专注于低碳和宜居30年，作品分布在澳大利亚、中东、中国、英国、印度、南非等地，获得国际奖项50余个，被20种语言引用传播。创始人Donald Bates现任墨尔本大学建筑系主席。代表作有：墨尔本联邦广场（被评为澳大利亚最年轻的历史保护建筑）、SOHO 尚都、南海里湖文化中心、珠三角洲水资源配套工程、中东阿卜杜拉金融中心零碳社区、花博会西太湖等一系列文化商业旅游综合体。LAB提供具有可持续价值的解决方案，将文化、商业和市民生活融为一体，成为具有鲜活生命力的城市遗产。

2024年正值事务所成立三十周年，“设计DNA”已经融入到我们的文化、商业道德、价值、尊重伙伴和生活方式中。LAB创始人Peter Davidson说：“from made in China to design in China, ‘中国进程’将举世羡慕”。LAB 更加以此为荣，尊崇设计文化，并取得客户和伙伴们的信任。穿梭间隙，一晃走进30 年的光影画卷，每一副作品都凝结着LAB 合作伙伴和客户的精心设计和辛勤超凡的工作。

LAB在可持续宜居领域，代表维多利亚州墨尔本和天津、南京、西安、等多地政府签订低碳绿色合作备忘录，获得了包括：2018 年联合国Construction21“绿色解决方案奖”、第一批“健康建筑示范基地”。LAB 主持了多个高端科技物业，在中东的迪拜卡塔尔和欧洲等地也有绿色低碳领域的建筑和规划。

LAB总裁Bates教授也是深圳、南京、海南、西安等重大项目的外籍专家评委。维多利亚州州长曾亲自参观了LAB 在中国南京的项目，关心低碳示范合作项目。

LAB坚信在中国，绿色低碳是每一个项目设计不可或缺的“标配”，而非选配。“主动优化、被动优先”的正向可持续建筑，将同时实现高效性能、环境友好，健康福祉。



'Draw the Line'
National Gallery of Victoria
维多利亚州国立艺术廊
'Draw the Line'作品展

Donald Bates教授和Peter Davidson先生展前视察展览现场。

Professor Donald Bates and Mr. Peter Davidson inspected the exhibition site before the exhibition.



Donald L. Bates

Director

Professor Donald Bates is a registered architect in Australia and the UK, and is the Director of LAB Architecture Studio. Professor Bates is currently the Chair of Architectural Design and Associate Dean (Engagement) at the University of Melbourne.

Professor Bates is a frequently invited juror on international design competitions, for projects in China, Vietnam, Europe, Libya, Lebanon, Armenia, and Australia. He was recently appointed as a juror to the Holcim Awards for Sustainable Construction, 2014. He is currently a member of the Victorian Design Review Panel, and has been an advisor to the School of Architecture, American University of Beirut and Department of Architecture, RMIT University. He is an External Examiner to the School of Architecture at Hong Kong University, and has been an External Examiner at the Bartlett School of Architecture and University of East London.

Professor Bates has lectured extensively in both an academic and professional capacity, with more than 140 lectures across North and South America, Europe, Asia and Australia in the last 20 years. He has been the subject of numerous interviews, in print, radio and television.

Donald Bates教授是澳大利亚和英国的注册建筑师，也是LAB Architecture Studio的创始人、现任总裁，并任墨尔本大学建筑系主席及执行副院长。

Bates 教授经常受邀担任国际设计竞赛的评委，其项目涉及中国、越南、欧洲、利比亚、黎巴嫩、亚美尼亚和澳大利亚。他最近被任命为2014年Holcim可持续建筑奖的评委。他目前是维多利亚设计审查小组的成员，并曾担任贝鲁特美国大学建筑学院和RMIT建筑系的顾问大学。同时，Bates教授也是香港大学建筑学院的特邀考官，并曾担任伦敦大学建筑学院的特邀考官。

在过去的20年里，Bates 教授在学术和专业方面进行了广泛的演讲，在北美和南美、欧洲、亚洲和澳大利亚举办了 140 多场讲座。他曾多次接受印刷品、广播和电视采访。

Director – LAB Architecture Studio
LAB事务所
创始人， 总裁

Chair - Architectural Design
Associate Dean (Engagement)
The University of Melbourne
墨尔本大学
建筑设计系主席chair
执行副院长

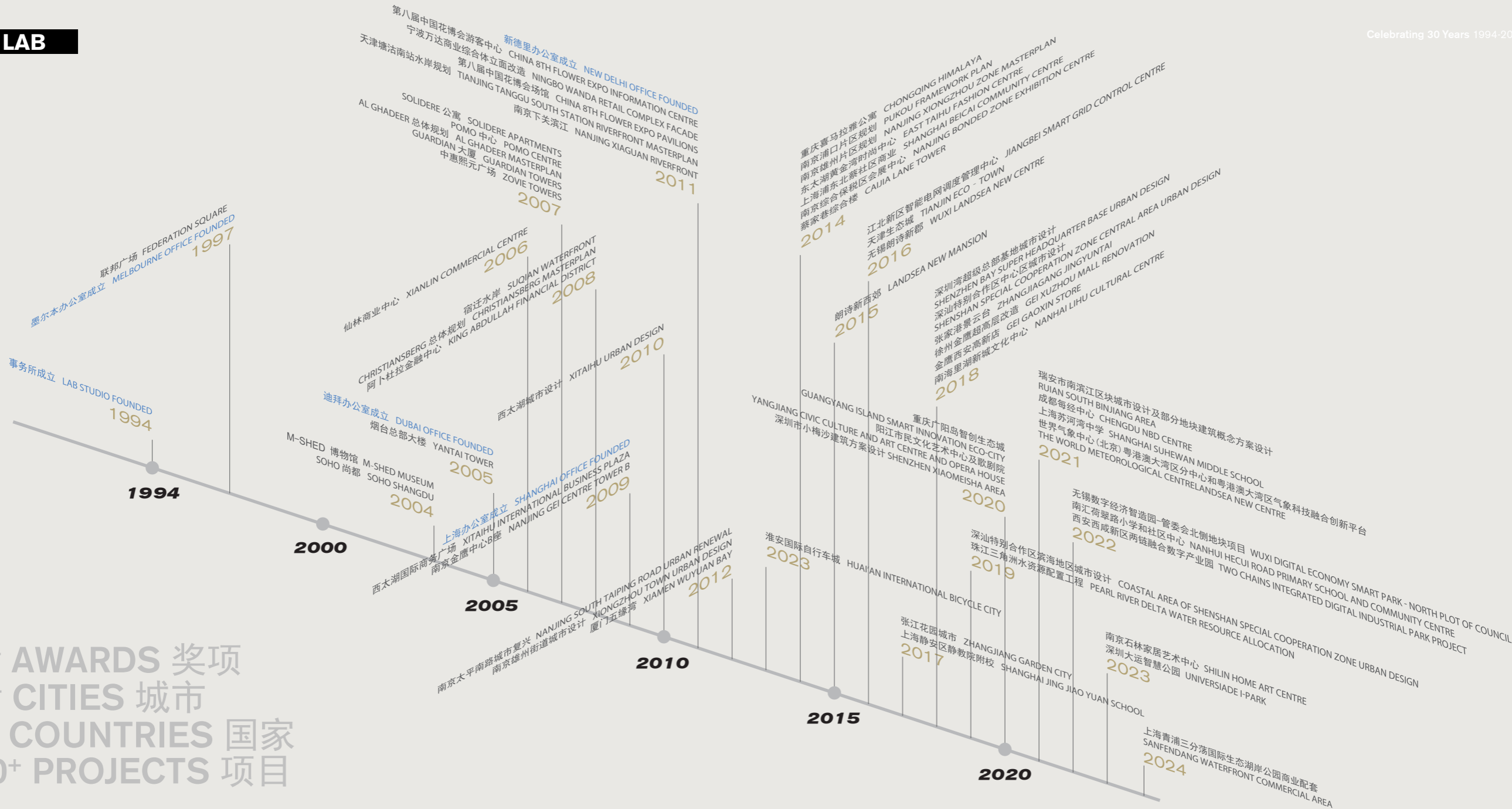
执业资格和专业技术职称：

| | | |
|----------|--------|-------------|
| 终身院士/会士， | LFRAIA | 澳大利亚皇家建筑学会 |
| 院士/会士， | RIBA | 英国皇家建筑学会 |
| 注册建筑师， | ARBV | 维多利亚州建筑师理事会 |
| 注册建筑师， | ARB | 英国建筑师注册理事会 |
| 特许建筑师， | RIBA | 英国皇家建筑师协会 |





50+ AWARDS 奖项
 80+ CITIES 城市
 17+ COUNTRIES 国家
 400+ PROJECTS 项目





FROM MADE IN CHINA TO DESIGN IN CHINA



2019.10.28

LAB 25TH

ANNIVERSARY PARTY



On October 28, 2019, the LAB 25th Anniversary Party and the "LAB Works Exhibition in the Last 10 Years" were held in Shanghai. Australian Consul General in Shanghai Dominic Trindade, Deputy Consul General of the Australian Government Trade and Investment Commission Liu Bing, Tim Dillon, Chief of Greater China of the Victorian Government of Australia, and other Australian agency leaders, Director of the Nanjing Municipal Bureau of Commerce Investment Promotion Department Hu Bin, Chief Architect of Huajian Group Liu Enfang, President of Zhongnan Land Jiangsu Regional Company Geng Minli, Director of Shanghai Chengfang Rental Housing Operation Management Co., Ltd. Zheng Hua, Vice President of Shanghai Urban and Rural Architectural Design Institute Co., Ltd. Yao Min, President of Shanghai Sanyi Architectural Design Co., Ltd. Gao Dong and other industry experts and partners, as well as Donald L. Bates, President and Chairman of LAB_Shangmo Architectural Design Office in Australia and other senior executives of the firm attended the event to review the 25-year design story and discuss the future direction of the city.

2019年10月28日，LAB25周年派对暨“LAB 尚墨最近10年作品展”在上海举行。澳大利亚驻沪总领事戴德明（Dominic Trindade）、澳大利亚政府贸易投资委员会副总领事刘冰、澳大利亚维州州政府大中华区首代狄龙（Tim Dillon）等澳方机构领导、南京市商务局招商处处长胡滨、华建集团建筑专业总师刘恩芳、中南置地苏南区域公司总裁耿旻黎、上海城方租赁住房运营管理有限公司董事郑华、上海城乡建筑设计院有限公司副院长姚敏、上海三益建筑设计有限公司院长高栋等业内专家及合作伙伴，以及澳大利亚LAB 尚墨建筑设计事务所总裁兼主席Donald L. Bates等事务所高层出席活动现场，回顾25年的设计故事，共同探讨城市未来的方向。



低碳建筑 城市室内

30年部分作品

**COLLECTION OF
PROJECTS
1994-2024**

综合社区
合体商文
体化市政

**MIXED USE
CIVIC + CULTURAL
SUSTAINABILITY
SOCIAL+COMMERCIAL**

**LOW CARBON CITY
URBAN DESIGN
ARCHITECTURE
INTERIOR**



LAB

CIVIC + CULTURAL



▲ 联邦广场
FEDERATION SQUARE
澳大利亚墨尔本
Melbourne, Australia (1997-2002)

市政+文化



▲ M SHED 博物馆
M-SHED MUSEUM
英国波里斯托尔
Bristol, UK (2004-2011)



▲ 第八届中国花博会场馆
CHINA 8TH FLOWER EXPO PAVILIONS
中国常州武进
Xitaihu, Changzhou, China (2011-2015)



▲ 文化岛
CULTURE ISLAND
阿联酋迪拜
Dubai, UAE (2006-2007)



CIVIC + CULTURAL



▲ 淮安国际自行车城
HUAIAN INTERNATIONAL BICYCLE CITY

中国淮安
Huai'an, China (2014-2019)

▲ 上海静安区静教院附校
SHANGHAI JING JIAO YUAN SCHOOL

中国上海
Shanghai, China (2017)

▲ 南海里湖新城文化中心
NANHAI LIHU CULTURAL CENTRE

中国佛山
Foshan, China (2018-2019)



◀ 珠江三角洲水资源配置工程
PEARL RIVER DELTA WATER
RESOURCE ALLOCATION

中国广州
Guangzhou, China (2019-)

市政+文化



▲ 阿卜杜拉金融中心
KING ABDULLAH FINANCIAL DISTRICT

沙特阿拉伯利雅得
Riyadh, Saudi Arabia (2008-2011)

◀ SOHO 尚都
SOHO SHANGDU

中国北京
Beijing, China (2004-2007)



▲ GUARDIAN 大厦
GUARDIAN TOWERS

阿联酋阿布扎比
Abu Dhabi, UAE (2007-2010)



▶ 中惠熙元广场
ZOVIE TOWERS

中国天津
Tianjin, China (2007-2016)

城市综合体

MIXED USE



▲ 南京蔡家巷综合楼
NANJING CAIJIA LANE TOWER
中国南京
Nanjing, China (2014)

◀ 南京金鹰中心B座
NANJING GEI CENTRE TOWER B
中国南京
Nanjing, China (2009-2017)

MIXED USE



▲ 两链融合数字产业园
TWO CHAINS INTEGRATED DIGITAL INDUSTRIAL PARK
中国西安西咸新区
Xixian New District, Xi'an, China (2022)



▲ 成都每经中心
CHENGDU NBD CENTRE
中国成都
Chengdu, China (2021)



▲ 江北新区智能电网调度管理中心
JIANGBEI SMART GRID CONTROL CENTRE
中国南京
Nanjing, China (2016)

城市综合体



2019年仙林商业中心立面更新
Xianlin Commercial Center Facade Update in 2019



▲ POMO中心
POMO CENTRE
新加坡
Singapore (2007-2008)

◀ 仙林商业中心
XIANLIN COMMERCIAL CENTRE
中国南京
Nanjing, China (2006-2008)



RETAIL ENVIRONMENTS

伽马大厦漩涡中心
VORTEX CENTRE
AT GAMMA TOWER
澳大利亚昆士兰
Queensland, Australia (2008-2011)



▲ 宿迁水岸
SUQIAN WATERFRONT
中国宿迁
Suqian, China (2008-2011)



▲ 上海浦东北蔡社区商业
SHANGHAI BEICAI COMMUNITY CENTRE
中国上海
Shanghai, China (2014-2017)

商业环境



RETAIL ENVIRONMENTS



▲ 宁波万达商业综合体立面改造
NINGBO WANDA RETAIL COMPLEX FACADE
中国宁波
Ningbo, China (2011-2012)



◀ 青浦三分荡国际生态湖岸
公园滨水商业片区
QINGPU SANFENDANG
INTERNATIONAL
ECOLOGICAL LAKESIDE
PARK WATERFRONT
COMMERCIAL AREA
中国上海
Shanghai, China (2024)



▲ 金鹰徐州超高层改造
GEI XUZHOU MALL RENOVATION
中国徐州
Xuzhou, China (2018-2019)



▲ 金鹰南京珠江路店立面提升
GEI NANJING ZHUJIANG MALL RENOVATION
中国南京
Nanjing, China (2021)

商业环境



▲ HAVEN酒店+商业中心
THE HAVEN HOTEL + RETAIL CENTRE

斐济苏瓦
Suva, Fiji (2007-2009)

◀ 活动大楼
KINETIC TOWERS

阿联酋迪拜
Dubai, UAE (2007-2008)



◀ 沙丘
THE DUNE

巴林岛金融港
Bahrain Financial Harbour, Bahrain
(2008-2009)



伽玛大厦 ▶
GAMMA TOWER

澳大利亚昆士兰
Queensland, Australia (2008)

公寓、酒店+度假村



▲ 西太湖国际商务广场
XITAIHU INTERNATIONAL BUSINESS PLAZA
中国常州
Changzhou, China (2009–2012)



◀ 东太湖黄金湾时尚中心
EAST TAIHU FASHION
CENTRE
中国苏州
Suzhou, China (2014–2015)



▲ 朗诗新西郊
LANDSEA NEW MANSION
中国上海
Shanghai, China (2015–2018)



▲ 梅沙观景台
XIAOMEISHA BAYSIDE TERRACE
中国深圳
Shenzhen, China (2020)

RESIDENTIAL,
HOTELS +
RESORTS

公寓、酒店+度假村



▲ 澳大利亚维多利亚州国立艺术廊
NGVA: NATIONAL GALLERY AUSTRALIAN COLLECTION
澳大利亚墨尔本
Melbourne, Australia (2002)

室内空间



▲ THE EDGE
THE EDGE
澳大利亚墨尔本
Melbourne, Australia (2002)

INTERIOR SPACE



▲ 喜马拉雅公区及兰博基尼咖啡厅
HIMALAYA LOBBY & LAMBORGHINI CAFE

中国重庆
Chongqing, China (2014-2017)

▲ 朗诗新西郊被动房
LANDSEA NEW MANSION

中国上海
Shanghai, China (2017)



◀ 都喜酒店
DUSIT D2 HOTEL

中国常州
Changzhou, China (2012)

室内空间

INTERIOR SPACE



LAB

CHRISTIANSBERG 总体规划 ▶
CHRISTIANSBERG MASTERPLAN

丹麦哥本哈根
Copenhagen, Denmark (2008)



▲ AL GHADEER 总体规划
AL GHADEER MASTERPLAN

沙特阿拉伯利雅德
Riyadh, Saudi Arabia (2007)



▲ 三林区域总体规划
SANLIN AREA CENTRE MASTERPLAN

中国上海
Shanghai, China (2009)



◀ 西太湖城市设计
XITAIHU URBAN DESIGN

中国常州
Changzhou, China (2010)



▲ 天津塘沽南站水岸规划
TIANJING TANGGU SOUTH STATION
RIVERFRONT MASTERPLAN

中国天津
Tianjin, China (2011)



▲ 南京下关滨江
NANJING XIAGUAN RIVERFRONT

中国南京
Nanjing, China (2011)

可持续性发展总体规划+城市设计

SUSTAINABLE
MASTERPLANS + CITIES



LAB

张江核心区城市设计 ▶
ZHANGJIANG CBD URBAN DESIGN

中国上海
Shanghai, China (2018)



◀ 深圳湾超级总部基地城市设计
URBAN DESIGN OF
SHENZHEN BAY SUPER
HEADQUARTER BASE

中国深圳
Shenzhen, China (2018)



▲ 南京太平南路城市复兴
NANJING SOUTH TAIPING ROAD URBAN RENEWAL

中国南京
Nanjing, China (2012)



▲ 深汕蓝色之城
SHENSHAN BLUE CITY

中国深汕特别合作区
Shenshan Special Cooperation Zone, China (2018)



▲ 重庆市广阳岛智创生态城城市设计
CHONGQING GUANGYANG ISLAND SMART
INNOVATION ECO-CITY URBAN DESIGN

中国重庆
Chongqing, China (2020)



▲ 大运智慧公园
UNIVERSIADE I-PARK

中国深圳
Shenzhen, China (2023)

可持续性发展总体规划+城市设计

SUSTAINABLE MASTERPLANS + CITIES



国际奖项
International awards

- World Architecture Festival Shortlist** China (2018)
- Green solutions awards** China (2018)
- Kinpan awards annual household space awards** China (2018)
- REAL estate design China award** China (2016)
- Certificate of achievement innovation in generative design** U.K (2013)
- The ceremony of China new pattern CRE awards** China (2012)
- Ten Buildings of the Beijing Olympic Games** (2008)
- Bristol Building Excellence Award** (2012)
- Jodi Mattes Trust Award for Digital Access onsite** (2011)
- MIPIM AR future project awards** (2008)
Commended
- FX international interior design awards** London (2003)
Best museum category
- Cityscape architectural review awards** (2007)
Commercial built + community future categories – shortlist
- Cityscape awards** Dubai (2003)
Urban design category
- Kenneth Brown award** Hawaii (2003)
Commendation for Asia Pacific architecture
- Urban Land Institute Award for excellence: asia pacific** USA (2005)
Best public project
- The Chicago Athenaeum International Architecture Awards** USA (2006)

澳大利亚奖项
Australian awards

- RAIA National award** (2007)
International architecture
- RAIA National awards** (2003)
Interior architecture award
Walter Burley Griffin award for urban design
- RAIA Victorian awards** (2003)
Victorian architecture medal
Marion Mahoney award for interior architecture
Melbourne prize Australia
Joseph Reed award for urban design
New award Australia
- Interior design awards Australia** Australia (2003)
- Australian institute of landscape architecture** (2003)
Award for design excellence
- Dulux interior colour award** (2003)
Public spaces category
- Public domain award** (2003)
For sustainability
- Governor of Victoria export awards** Commendee (2005)
- Property Council of Australia – Victorian division** Australia (2005)
State winner of 2005 and best public building
- MBA national building & construction awards** (2006)
Export award under \$25m
- Australian stone architectural awards**
Best civic project (2006)



MAKING THINGS HAPPEN.

— by LAB founding director Donald L. Bates

A LINE LOOKING FOR ANOTHER LINE.

— by LAB founding director Peter Davidson

IT'S NOT ONE THING, BUT MANY THINGS SIMULTANEOUSLY.

— by LAB founding director Donald L. Bates

FROM MADE IN CHINA TO DESIGNED IN CHINA.

— by LAB founding director Peter Davidson

INFORM THE FORM.

— by LAB founding director Peter Davidson

COMMERCIAL ACTIVITIES ENGAGE WITH IDEAS AND IMPINGE ON DAILY LIVES.

AS A CONSEQUENCE OF A DESIGN ETHOS THAT EMBRACED THE MULTI-FACETED INTERTWINING OF THE CIVIC, THE CULTURAL AND THE COMMERCIAL.

— by LAB founding director Donald L. Bates

WHAT WE CAN OFFER AND WHAT WE CAN BRING.

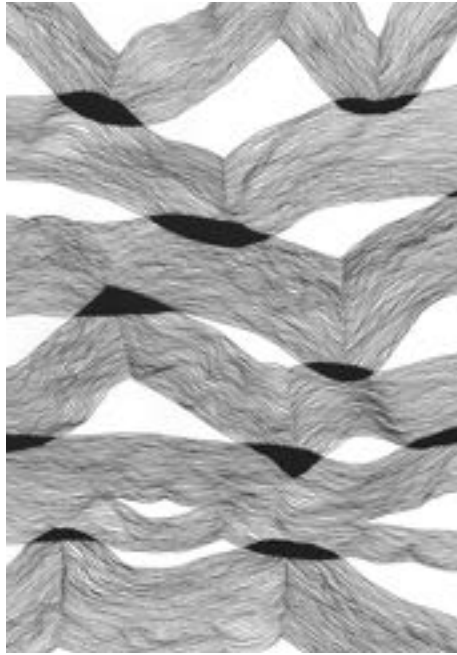
IN TERM OF DELIVERING QUALITY OF LIFE TO THE CITY.

— by LAB founding director Donald L. Bates

澳大利亚LAB建筑师事务所
LAB ARCHITECTURE STUDIO
www.labarchitecture.com
www.labaus.com

上海 SHANGHAI
上海尚墨建筑设计工程有限公司
上海市愚园路1107号2号楼 邮编: 200050
BUILDING 2, 1107 YUYUAN ROAD, SHANGHAI 200050 PRC
电话 T + 86 21 6211 0286 传真 F +86 21 6211 2353
lab_shangmo@labaus.com

墨尔本 MELBOURNE | 上海 SHANGHAI



By founding director Peter Davidson Peter大师的画作